

時間の反響

Aron FRANK

L'écho du temps  
The echo of time

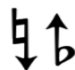
pour violon et piano (2022)


## PROGRAM NOTE

**L'écho du temps** (The echo of time), is a work for violin and piano composed in July 2022, for the summer composition program of the *Écoles d'art américaines de Fontainebleau*. The piece emerged from an interest in Japanese calligraphy and its influence on Western art, in particular the way in which characters embody their own inner meanings visually. While this is unique to certain languages of Far Eastern Asia, it was explored by many abstract expressionist painters of the West, including American painter Franz Kline in the mid-20<sup>th</sup> century. For modernist painters like Kline, the artist's stroke not only suggests the movement of the body, but was also expressive of inner qualities. Abstract as it appears, calligraphy also conveys something about the essence of the artist, and it was this notion that inspired me to create a "catalogue of gestures" between the two instruments. In doing so, the physical movements of the players, and the ensuing sounds they produce, are representative of calligraphic symbols being drawn in real time. The addition of a traditional Japanese gong, at the beginning and end of the piece, is also supportive of this compositional approach. As I imagined the work conceptually, three larger ideas guided my compositional process: sound, space, and movement. In bringing these concepts together, the piece was composed of an overarching ABA structure, and the emergence of a lyrical, impressionistic middle section, is set off by the more fragmented, atmospheric outer portions. Using the instruments as resonant bodies, it was my attempt to draw the listener into a sound world which, like calligraphy, is expressive of deeper, transcendent meanings.

The work was premiered on 25 July, 2022, by Amy Oh (violin) and Sae Hae Bae (piano) at the *Château de Fontainebleau*, and was awarded the *Deuxième prix* (2nd prize) in composition by the Fondation Maurice Ravel.

## PERFORMANCE INSTRUCTIONS

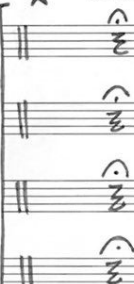
 Indicates a half flat, and lowers the pitch by a quarter tone

 Indicates a half sharp, and raises the pitch by a quarter tone

OPTIONAL INTRODUCTION: (1)

Japanese Gong (unpitched)

★ Silence, Emptiness

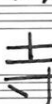


(1)



mf

(2)



(wood of stick)

scrape along the fronts in a circular motion, with the wooden stick

p

f

mf

mf

mf

mf

mf

mf

mf

mf

(3)



ord.

p

mf

mf

mf

mf

mf

mf

mf

mf

mf

mf

L'écho du temps (2022)  
pour violon et piano

(4)



(wood of stick)

mf

f

mf

mf

mf

mf

mf

mf

mf

mf

(5)



ord.

p

mf

mf

mf

mf

mf

mf

mf

mf

mf

mf

(6)



ord.

p

mf

mf

mf

mf

mf

mf

mf

mf

mf

mf

mf

★ At the opening of the piece, the Japanese characters spelling "L'écho du temps" are expressed in six distinct musical gestures, utilizing a traditional Japanese gong. Following a brief silence, the piece for violin and piano begins.

Aron FRANK  
(2022)

SB18S64





Violin I (Vln. I) and Piano (Pno.) staves. Dynamics: *mp*, *mf*, *p*. Performance markings: *mf* (slight accents), *p*, *mp*, *pp*. Fingerings: 5, 4, 3, 2, 1. Pedal points (PED) are indicated.

Violin II (Vln. II) and Piano (Pno.) staves. Dynamics: *mf*, *p*, *mp*, *pp*. Performance markings: *mf*, *p*, *mp*, *pp*. Fingerings: 5, 4, 3, 2, 1. Pedal points (PED) are indicated.

Violin I (Vln. I) and Piano (Pno.) staves. Section: **SENZA MISURA**. Dynamics: *f*, *intense*, *ff*, *pp*, *mp*, *p*. Performance markings: *Senza molto vibrato*, *ordinario*, *gliss., espressivo*, *cresc.*, *loco*, *sim.*. Fingerings: 5, 4, 3, 2, 1. Pedal points (PED) are indicated.

Violin I (Vln. I) and Piano (Pno.) staves. Section: **TEMPO I° (♩ = 70)**. Dynamics: *pp*, *mp*, *p*, *mf*, *pp*. Performance markings: *repeat ad libitum with alterations (resonance) of dynamics and subtle accents*, *tr.*, *ord.*, *sim.*, *pp*, *mp*, *p*. Fingerings: 5, 4, 3, 2, 1. Pedal points (PED) are indicated.

SENZA MISURA

Fontainebleau, France  
July, 2022

Fontainebleau, France  
July, 2022

« An awareness of the Universe  
that triggers emotional responses  
too deep and powerful for words »

幽玄  
YÜGEN (Japanese)